

NACSW™ Trial Container Guidelines for Members

Effective April 1, 2024

In order to continue to provide a trial experience that is as consistent as possible for our competitors, here are guidelines that provide parameters for container types and sizes that may be encountered at an NACSW trial. Additionally, information about distractors at NW2 and NW3 are now included. Minor variations to the guidelines may be approved on a case-by-case basis, but we hope this helps everyone have a better understanding of what they can expect at trials. We also hope that this helps our competitors better prepare for training. However, we also encourage everyone to continue to train on many variations of containers and distractors outside of these parameters to help the dog have experience in as many odor scenarios as possible.

TYPES OF CONTAINERS

Here are our guidelines in a nutshell. Please see the rest of the document for more information about venting and container specifics.

ORT - Literature mailers

NW1 - Literature mailers and/or Sterilite shoe boxes.

L1C - Literature mailers, Sterilite shoe boxes.

NW2/3, L2/3 - Literature mailers, Sterilite shoe boxes, Plastic tool boxes, 1 Gallon paint cans (plastic or metal)

ORT, NW1, & L1C

Single Wall Corrugated cardboard literature mailers without side flaps should be available at all NW1 trials (AKA ORT boxes).

Size requirements:

Length 8" – 12"

Width 6" – 10"

Height 2.5" – 6.5"

No venting is necessary.



NW1 & L1C

Sterilite 6 Quart/5.7 Liter Storage Box, with non-transparent lid ("shoe boxes").

If these have transparent sides, boxes will need to be stuffed with new, clean paper. Must be vented as per guidelines above.



NW2/3 & L2/3C

In addition to those listed for NW1 & L1C:

Plastic tool boxes Dollar Tree "Tool Bench" Hardware tool boxes. No drilled holes for venting as their construction allows for adequate ventilation.

Standard sized plastic or metal 1 gallon paint can

Size requirements:

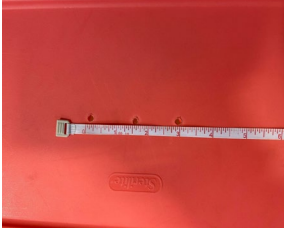
Diameter approximately 6.5", Height approximately 7.5"

Elite Select, Elite, Elite Premier & Summit

These levels often do not have a container search. If there is a container search, it may be made up of any of the containers listed above and may also include suitcases and luggage types of containers.

VENTING CONTAINERS

- Cardboard containers do not need any holes added for venting.
- Plastic and metal containers must have securely fitted solid, non-transparent lids with holes in the lid to allow odor to vent. Dollar Tree “Tool Bench” Hardware tool boxes do not need any holes drilled for venting as their construction allows for adequate ventilation.
- Plastic and metal containers should have 3 holes in the lid.
- The holes should be made using a drill bit size that should be 3/16”. Variation between 1/8" to 1/4" is acceptable. This is approximately the diameter of the pointed end of a chopstick.
- Holes will generally be in a line but for paint cans may be in a triangle shape.



DISTRACTORS

Effective January 1, 2024

We wanted to provide guidance on expectations for distractors at NW2 and NW3.

NW2

- Four Distractors will be required in one Container search.
 - One toy distraction of either a tennis ball or a Kong.
 - Three Food distractors which will consist of items from at least two of the following categories:
 - Fruit/Vegetable
 - Meat
 - Cheese
 - Carbs (Bread/Crackers/Chips/Pasta, etc)
- In the case of a trial day with more than one Container search, these new parameters will be in only one of the NW2 Container searches.

NW3

- Distractors will continue to be at the Certifying Officials discretion for NW3 trial days.
- The number of distractors in a search will depend on the overall challenges for the day.
- Distractors will come from the same categories listed in the NW2 information above.
- In the case of a trial day with more than one Container search, distractors may be in one or both searches and will be unknown to the handler.

ODOR PLACEMENT

We typically use 3 scented half swabs secured inside the container lid with transparent tape. On occasion, there may be situations where a scent vessel like a tube or tin is used instead. There may also be situations when more or less than 3 swabs may be used. Our recommendation is to train for all scenarios. For luggage, swabs may be attached directly to the luggage or in a scent vessel and are generally placed inside the luggage or pocket.

For trials, odor swabs are supplied by the NACSW. Instructions for making or purchasing NACSW odor are located at: <https://nacsw.net/ort-trial-information/target-odors>